

## Product Information Vacuum Regulator for Chlorine Gas C 2700-V

### Vacuum Chlorinators

State of the art chlorinators are designed for vacuum operation. Thus ensuring the highest safety standards for handling of this toxic medium are met. In regulating the vacuum the C 2700-V provides the main function of these kinds of chlorinators.

### Function

Pressurized chlorine is fed out of the chlorine drum into the metallic inlet valve at the bottom of the vacuum regulator. It is closed by a highly chemical resistant spring.

The PVC outlet is connected to the ejector. In case of sufficient vacuum the internal diaphragm opens the inlet valve and the needed amount of chlorine gas flows into the vacuum system. Should the vacuum become insufficient the spring closes the system again. This causes a constant vacuum in the pipeline downstream of the vacuum regulator.

A constant vacuum ensures the high safety levels of the system: In case of leakage surrounding air is sucked into the pipe and no dangerous amounts of chlorine escapes into the atmosphere.

If strong dirt at the inlet valve causes a leakage an internal relief valve opens and vents the system in direction of a neutralization system like for example a chlorine scrubber.

### Adapting to your Installation

All materials are selected based on expertise obtained by Lutz-Jesco from handling the materials. To make them suitable for your application, Lutz-Jesco provides different types of connections and optional pressure gauges.



### In short

- Flow rate with chlorine gas: up to 200 kg/h
- Safe operation with vacuum technology
- Included relief valve
- Highly resistant materials
- Optional pressure gauge

## Technical data

Flow rate with chlorine		up to 200 kg/h	
Inlet pressure		1.5 ... 16 bar	
Operation vacuum		-50 mbar	
Relief pressure		500 mbar	
Pressure gauge (optional)		0 ... 16 bar / Ø63 mm	
Materials of construction	Inlet valve	nickel plated brass, Monel, Hastelloy	
	Vacuum part	PVC	
	Sealings	FPM, PTFE	
Weight (with flange and pressure gauge)		8 kg	
Ambient temperature		0 ... 40 °C (no direct sun light)	

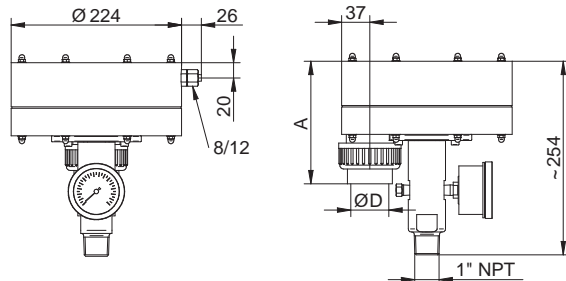
## Model variants

Inlet connection	Pressure gauge	Order no.
		200 kg/h
1" NPT male	without	21200100
	0 ... 16 bar	21200101
Flange DN25	without	21200102
	0 ... 16 bar	21200103

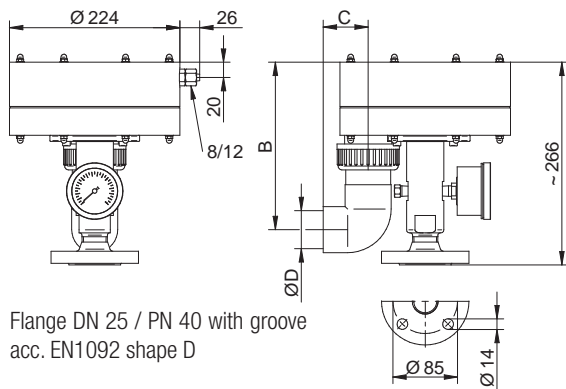
Flanged vacuum regulators are delivered including a gasket and a set of screws.

## Dimensional figure

Vacuum regulator with threaded inlet connection



Vacuum regulator with flanged inlet connection



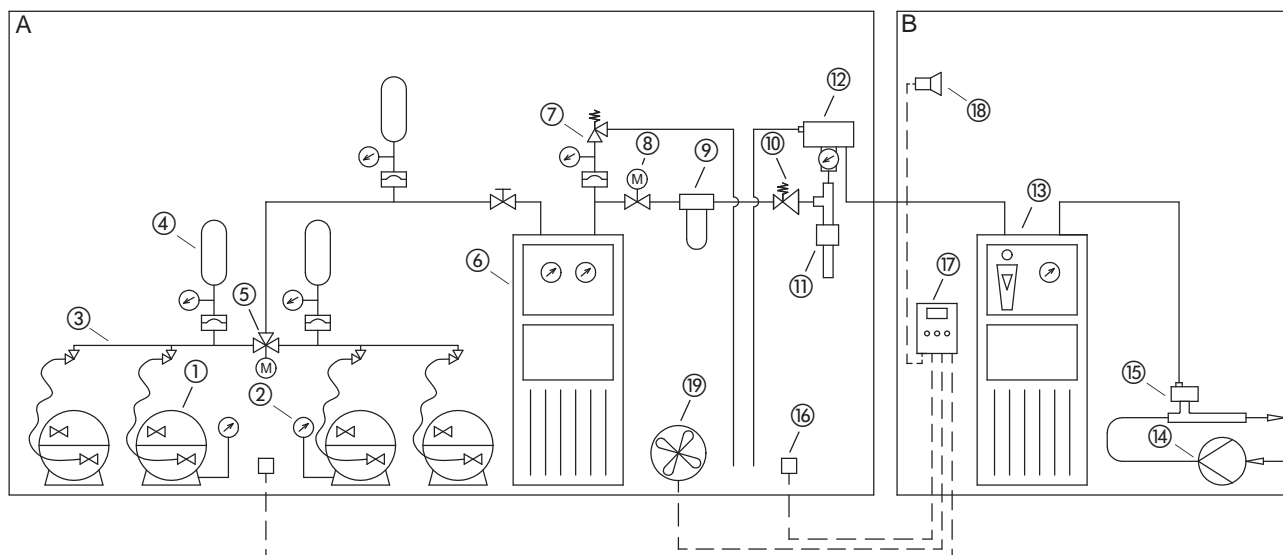
Flange DN 25 / PN 40 with groove  
acc. EN1092 shape D

All dimensions in mm

Measure	200 kg/h
A	161
B	220
C	59
ØD	50

# Product Information Vacuum Regulator for Chlorine Gas C 2700-V

## Installation Example



A	Room for chlorine supply
①	Chlorine drum
②	Chlorine drum scale
③	Manifold
④	Expansion chamber
⑤	Changeover valve
⑥	Chlorine evaporator
⑦	Pressure relief system
⑧	Quick-action valve
⑨	Chlorine gas filter
⑩	Pressure reducer
⑪	Catchpot with heater
⑫	Vacuum regulator
⑬	Gas sensor
⑭	Inlet of chlorine scrubber

B	Room of dosing equipment
⑬	Chlorinator
⑭	Booster pump
⑮	Ejector with check valve
⑯	Gas warning device
⑰	Horn

## Accessories

Description	Order no.
Flange DN 25 / PN 40 with tongue acc. EN1092 shape C	Threaded flange 1" NPT female 15927
	Weld neck flange Ø33.7 x 4 mm 39516
Liquid sealing compound 50 ml for bonding of 1" NPT-threads	97715
Ammonia solution 50 ml for leakage test	13514
8/12 mm PE tubing for relief valve	97124

## Spare parts

Description	Order no.
Small maintenance kit (for annual service) gaskets, valve seat, screws, flange gasket, rubber hose for relief valve	39511
Large maintenance kit (after 3 years) includes small maintenance kit, diaphragm, valve cone, spring	39512
Maintenance kit for diaphragm disc: Diaphragm, screws, rubber hose for relief valve (included in the large maintenance kit)	39513
Pressure gauge 0 ... 16 bar connection 1/4" NPT male (Replacement is recommended after 5 years of use)	24087599