

Product Information Chlorinator C 2525-V

Vacuum Chlorinators

State of the art chlorinators are designed for vacuum operation. Thus ensuring the highest safety standards for handling of this toxic medium are met. In regulating the vacuum the C 2525-V provides the main function of these kinds of chlorinators.

Function

Pressurized chlorine is fed out of the chlorine drum into the metallic inlet valve at the bottom of the vacuum regulator. It is closed by a highly chemical resistant spring.

The PVC outlet is connected to the ejector. In case of sufficient vacuum the internal diaphragm opens the inlet valve and the needed amount of chlorine gas flows into the vacuum system. Should the vacuum become insufficient the spring closes the system again. This causes a constant vacuum in the pipeline downstream of the vacuum regulator.

A constant vacuum ensures the high safety levels of the system: In case of leakage surrounding air is sucked into the pipe and no dangerous amounts of chlorine escapes into the atmosphere.

If strong dirt at the inlet valve causes a leakage an internal relief valve opens and vents the system in direction of a neutralization system like for example a chlorine scrubber.

Adapting to your Installation

All materials are selected based on expertise obtained by Lutz-Jesco from handling the materials. To make them suitable for your application, Lutz-Jesco provides different types of connections and optional pressure gauges.



In short

- Flow rate with chlorine gas: up to 25 kg/h
- Safe operation with vacuum technology
- Included relief valve
- Highly resistant materials
- Optional pressure gauge

Technical data

Flow rate with chlorine		up to 25 kg/h
Inlet pressure		1.5 ... 16 bar
Operation vacuum		-50 ... -100 mbar
Relief pressure		50 mbar
Pressure gauge (optional)		0 ... 16 bar / Ø63 mm
Materials of construction	Inlet valve	nickel plated brass, ceramic, Hastelloy
	Vacuum part	PVC
	Sealings	FPM, PTFE
Weight (with flange and pressure gauge)		6 kg
Ambient temperature		0 ... 40 °C (no direct sun light)

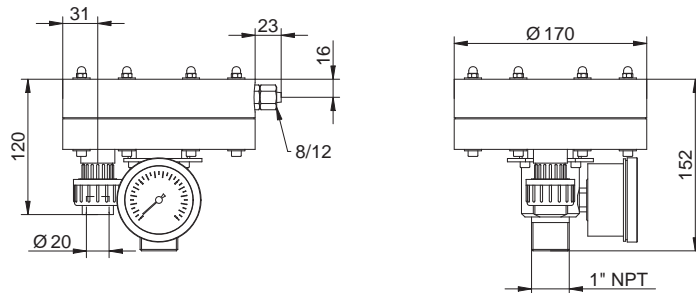
Model variants

Inlet connection	Pressure gauge	Order no.
1" NPT male	without	20238620
	0 ... 16 bar	20238631
Flange DN 25	without	20839051
	0 ... 16 bar	20839041

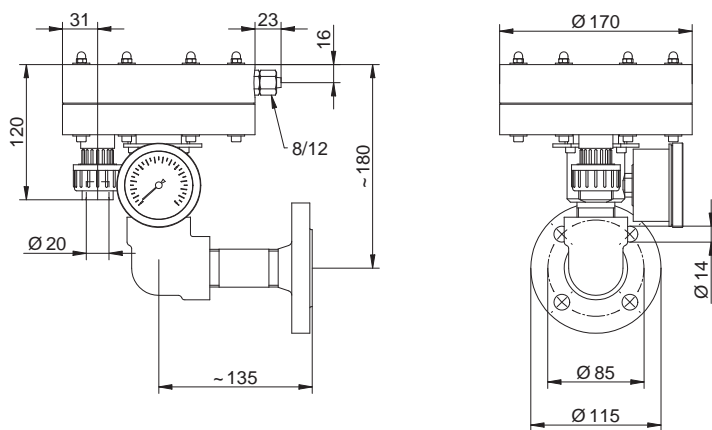
Flanged vacuum regulators are delivered including a gasket and a set of screws.

Dimensional figure

Vacuum regulator with threaded inlet connection



Vacuum regulator with flanged inlet connection

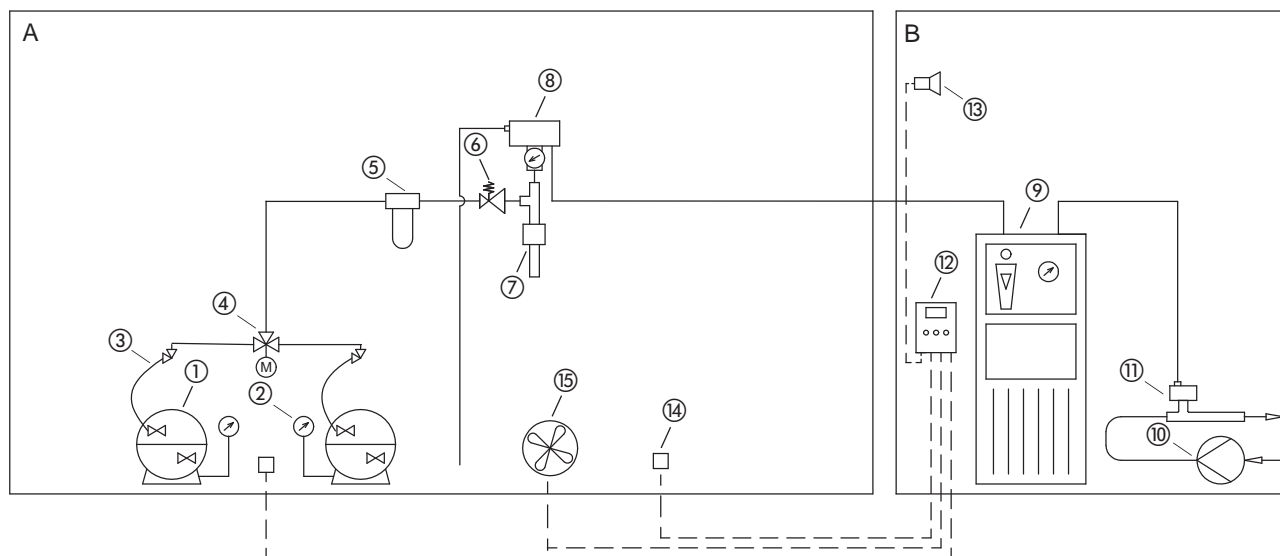


Flange DN 25 / PN 40 with groove
acc. EN1092 shape D

All dimensions in mm

Product Information Chlorinator C 2525-V

Installation example



A	Room for chlorine supply
①	Chlorine drum
②	Chlorine drum scale
③	Manifold
④	Changeover valve
⑤	Chlorine gas filter
⑥	Pressure reducer
⑦	Catchpot with heater
⑧	Vacuum regulator
⑭	Gas sensor
⑮	Inlet of chlorine scrubber

B	Room of dosing equipment
⑨	Chlorinator
⑩	Booster pump
⑪	Ejector with check valve
⑫	Gas warning device
⑬	Horn

Accessories

Description	Order No.
Flange DN 25 / PN 40 with tongue acc. EN1092 shape C	15927
Threaded flange 1" NPT female	39516
Weld neck flange Ø33.7 x 4 mm	97715
Liquid sealing compound 50 ml for bonding of 1" NPT-threads	13514
Ammonia solution 50 ml for leakage test	97124
8/12 mm PE tubing for relief valve	

Spare parts

Description	Order No.
Maintenance kit for inlet valve (for annual service) includes: gaskets, valve seat, ball, spring, screws	39369
Maintenance kit for C 2525-V (for bi-yearly service) includes: complete diaphragm plate, maintenance kit for inlet valve	38555
Gasket for flange DN 25 / PN 40 with groove and tongue	81421
Pressure gauge 0 ... 16 bar connection 1/4" NPT male (Replacement is recommended after 5 years of use)	24087599

Special tools

Description	Order No.
Wrench for mounting the diaphragm (2 wrenches are required)	25268